

# A. Harrison

Wood turning, furniture making & timber supplies



About Me

Ash & Elm

Oak & Beech

Burr Elm

Laburnum

Cedar

Boxwood

Sycamore

Yew

Cherry

English Walnut

Horse Chestnut

Poplar (Lime)

Firewood

Commissions

Woodturning

Landscaping

Tel: 01536 725192

Mob: 07780 768625

E-Mail: [Andy.Harrison@AHarrisonwoodturning.co.uk](mailto:Andy.Harrison@AHarrisonwoodturning.co.uk)

# About Me

## About Me

I have public liability insurance to the value of £5,000,000. This covers all aspects of my work; be it tree felling or installing a natural wood kitchen.

I am able to provide references for all the types of work that I undertake. Please ask if you wish to take them up. I won't be offended.

This catalogue only represents a portion of the wood that I can obtain. It is not unusual for more exotic or specialist woods to be obtained. If there is anything that you do not see then contact me and I will do my best to obtain it.



Just one of the many rows of turning blanks in the wood store.

Being interested in turning I can also supply turning blanks and squares. All are dry and ready to be turned immediately. As the owner of a timber yard, it is relatively easy for me to procure large sizes and more specialist, exotic woods, e.g. Spalted Beech, Cocobolo and Burr Elm. Carving blanks of similar sorts are also available.



Huge, thick slabs of 10 year old air dried Ash.

My name is Andrew Harrison and I specialise in supplying high grade native British hardwoods, as well as providing high quality machining and turning services. I started woodworking in 1981 and quickly became interested in turning. This interest has continued throughout my life and so I have a huge number of bowls, cups and other turnings for sale. I also enjoy making commissions and other custom work. I am more than happy to visit woodworking clubs to share my expertise by arrangement.



Huge conifer beams waiting to be tanalised for use as railway sleepers.

I also have in stock a huge supply of planks and boards for furniture making. Almost all is 10 year old air dried material. I offer many thicknesses and could even supply a 6 inch thick workbench top! With many special woods, e.g. Birdseye Maple and Evergreen Oak available I can supply almost any type of native British hardwood, for almost any purpose.



A stock of monkey puzzle trees- perfect for turners.

Freshly sawn Poplar



Wood-Mizer Bandsaw Mill, used to convert large logs

This supply is complemented by a machining service. If you are unable to surface and finish timber I can perform this for you, including cutting it to size.

In addition to the supply of timber and turning, I also undertake structural work which involves the design, cutting, erection of timber based structures and landscaping, such as at Pipewell Hall.

The other side of my business involves tree removal. Once we have felled your tree I can then mill it on site using a bandsaw or chainsaw mill.

## About Me

I have a team of 5 other people who support me in the running of my business and my timber yard where I store all my timber. If you wish you can visit my timber yard and we can select the exact type of wood that you need, which is just right for your project.

At my timber yard I have a large array of industrial size machinery to handle any job. In addition to the chainsaw and bandsaw mill, a comprehensive workshop is situated inside a large barn. Running off 3-phase power I can easily handle most machining and finishing jobs. I am particularly proud of my 32 inch planer. Capable of removing up to 1 cm in one pass it is hugely powerful. See the below picture for the quantity of shavings spewed out by it.



A very, very large planer

## The Timber Yard

The timber yard is situated in Kettering, Northamptonshire. If you are in need of any timber then it is best to pay the yard a visit where you can pick out your own timber. Otherwise you can contact me with details of your requirements.



The workshop containing all the machinery needed to machine and finish timber

A store of 10 year old air dried Oak.

When it comes to traditional English timbers can provide almost any size of wood. Huge stocks of furniture grade wood built up over decades will satisfy even the most fastidious cabinetmaker. New stock is always coming in from my work as a tree surgeon, so I am confident about fulfilling any needs.

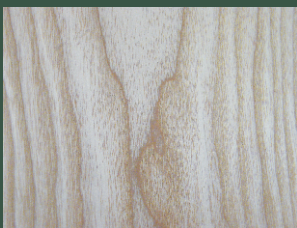




# Ash & Elm

## Ash & Elm

Ash boards are available in multiple grades. Ranging from defect free wood with excellent figure and colour to more character filled boards I can supply any customers needs with regard to Ash. I have a huge stock of 10 year old air dried Ash perfect for furniture making.



**Rippled Ash:** has an even mass of ripple grain running at right angles to the grain of the wood. This can be found in both white and coloured Ash. The combination of both Rippled and Olive Ash is quite stunning. Much of my Ash stock displays rippling.

**Olive Ash:** is a very attractive wood where the heartwood colour is dominant giving a marbled effect. I hold large stocks of Olive Ash.

## English Ash (Fraxinus Excelsior)



The heartwood is a cream or possibly a pale tan colour. In most logs light brown heartwood is found, which is strong and sound. The wood is always tough, flexible and has a remarkably straight grained. The texture is coarse, but even and takes all finishes, including stains very well, smoothing to an excellent finish. With a specific gravity of 0.71 this is a tough, heavy and dense hardwood that is fairly split resistant. It has excellent steam bending properties. Ash dries fairly rapidly and so needs care to avoid surface checking and splitting. It undergoes medium movement in service.

## Discs

Diameter		Thickness			
		2" 51mm	3" 76mm	4" 101mm	
4"	101mm	£1.40		£2.45	
5"	122mm	£2.00	£3.00	£4.00	
6"	152mm	£2.90	£4.35	£5.80	
7"	178mm	£3.95	£5.90	£7.85	
8"	203mm	£5.10	£7.70	£10.20	
9"	229mm	£6.50	£9.70	£12.95	
10"	254mm	£8.00	£12.00	£16.00	
11"	280mm	£9.70	£14.50	£19.35	
12"	305mm	£11.50	£17.20	£23.00	
13"	330mm	£13.50	£20.20	£27.00	
14"	356mm	£15.70	£23.50	£31.30	

Ash has a moderate blunting effect on tools and resists cutting edges, but despite this it works well with all hand and machine tools. It is necessary to pre-bore for nailing. The wood is relatively perishable being susceptible to insect attack by the common furniture beetle. Ash is valued around the world for the manufacture of striking-tool handles and is often used in cabinetmaking and furniture.





A small portion of my store of 10 year old air dried Ash-see how thick the boards are! Call for availability.

Both Ash and Elm are sold at approximately the same price. The prices on this page are only a guideline. Due, to Dutch Elm Disease stocks of Elm have become rarer. Although we hold a large stock of Elm we cannot always guarantee the price.

## English Elm



The Elm heartwood colour is dull brown colour, with distinct annual rings, giving a coarse texture to the wood. Tends to be of irregular growth and cross grained. Elm has a specific gravity of 0.55. It is of medium density with low bending and crushing strengths, very low stiffness and resistance to shock loads. It is a reasonable wood for steam bending.

### Boards

Thickness		Price (per cu. ft)
1"	25mm	£35.00
1 1/2"	38mm	£35.00
2"	51mm	£35.00
3"	76mm	£35.00
4"	101mm	£35.00
5"	122mm	£37.00
6"	152mm	£39.00

Elm dries fairly rapidly with a great possibility of distortion and a liability for collapse to occur. As such, use closely spaced sticks for drying to minimise distortion. There is medium movement in service. The timber is not very durable and is often subject to insect attack. It is often used for high class cabinet work and Windsor chair making. Able to survive in damp conditions it is used in harbours and in the coffin making industry.

### Squares

Width/Thickness		Length			
		12" 305mm	18" 452mm	24" 610mm	
2"	51mm	£1.95	£2.90	£3.85	
3"	76mm	£4.30	£6.50	£8.60	
4"	101mm	£7.70	£11.50	£15.40	
5"	122mm	£12.00	£18.00	£24.00	
6"	152mm	£17.20	£25.90	£34.40	

## Ash & Elm



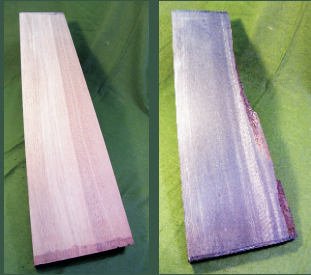
A large wane edged elm board, with a close up shot of the grain shown below. large boards are kept in stock at all times. Call for availability.

Elm is not an easy timber to work with; as it tends to bind on the saw blade and considerable tearout is often present when planing. There is a moderate blunting effect on tools which should be kept sharp. It accepts nails and screws without splitting; glues good and the wood stains, polishes and waxes to a high finish.

# Oak & Beech

I can also supply Quarter Sawn Oak, Brown Oak and Bog Oak. Pictures of the latter two are shown below.

## Oak & Beech



When working with Oak there is a moderate to severe blunting effect on cutters, which should be kept sharp. Quartered stock requires a cutting angle of 20°. The wood is often limed, but also responds very well to waxing and other finishes.

The lack of permeability of the heartwood makes Oak ideal for retaining liquids. Cognacs, wines and beers are often matured in oak casks. Oak is used for all applications where it is in contact with the ground, such as railway sleepers. It is also a high class joinery wood for timber frames and ecclesiastical work.

## Oak (Quercus Robur)



The heartwood is a light tan to biscuit colour, usually straight grained, but irregular or cross-grained material can occur depending on growth conditions. On quarter sawn stock sliver flecks are apparent due to broad rays. English Oak is tough and hard with a specific gravity of 0.72.

Oak has a very good steam bending classification, but is susceptible to blue/black stains if left in contact with iron (e.g. clamp bars). It dries very slowly with a tendency to split and check. There is medium movement in service. The heartwood is durable, but extremely resistant to preservative treatment, whereas the sapwood is permeable. Oak is naturally acidic and so ferrous metals should not be used with it.

## Discs

Diameter		Thickness							
		1" 25mm	1 1/2" 38mm	2" 51mm	3" 76mm	4" 101mm			
4"	101mm	£1.00	£1.25	£1.30	£1.95				
5"	122mm	£1.25	£1.50	£2.00	£3.00	£4.00			
6"	152mm	£1.80	£2.20	£2.90	£4.35	£5.80			
7"	178mm	£2.45	£2.95	£3.95	£5.90	£7.95			
8"	203mm	£3.20	£3.85	£5.15	£7.70	£10.25			
9"	229mm	£4.05	£4.90	£6.50	£9.75	£12.95			
10"	254mm	£5.00	£6.00	£8.00	£12.00	£16.00			
11"	280mm	£6.05	£7.30	£9.70	£14.55	£19.35			
12"	305mm	£7.20	£8.65	£11.55	£17.30	£23.00			
13"	330mm	£8.45	£10.15	£13.55	£20.30	£27.00			
14"	356mm	£9.80	£11.80	£15.70	£23.55	£31.35			



An Oak board

In both Oak and Beech clear stock is readily available as are boards with character.



A Beech board

## Beech (Fagus Sylvatica)



Beech dries rapidly but has a tendency to warp, check and shrink requiring care at this stage. When dry there can be movement in service. The wood is perishable, but receives preservative treatment readily.

The ease with which beech works is very dependent on the conditions it grew and was dried under. Badly dried timber is a chore to work with, but all my Beech has been correctly and carefully dried and so offers medium resistance to hand and power tools and has a moderate blunting effect on cutting edges. Pre-boring is necessary for nailing and it glues readily.

The heartwood varies in colour from a very pale white to a pinkish brown. Some logs will have darker veining, but all Beech has a straight grain and a fine, even texture that stains well and takes an excellent finish. With a specific gravity of 0.72 the wood has medium stiffness, high crushing strength and a medium resistance to shock loads. It also steam bends exceptionally well, even tolerating knots.

### Boards

Thickness		Price (per cu. ft)
1"	25mm	£36.00
1 1/2"	38mm	£36.00
2"	51mm	£36.00
3"	76mm	£38.00
4"	101mm	£42.00

### Squares

Width/Thickness		Length			
		12" 305mm	18" 452mm	24" 610mm	
2"	51mm	£1.95	£2.90	£3.90	
3"	76mm	£4.35	£6.50	£8.70	
4"	101mm	£7.70	£11.55	£15.40	

Beech is commonly used in cabinetmaking and high class joinery along with a whole host of other diverse uses, such as shoe heels!

## Oak & Beech

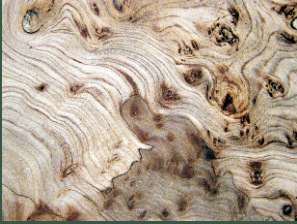


**Spalted Beech:** is mainly found in wood been attacked by a fungus when left as a stump to rot slightly. It is apparent in the form of fine black and brown irregular stripes. I have accumulated a large stock of Spalted Beech over the years.

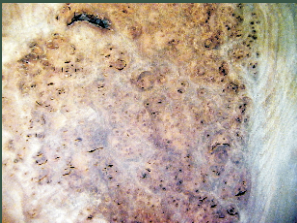




# Burr Elm



Burr Elm



## Burr Elm (*Ulmus Procera*)

Burr Elm has the same properties as English Elm. However, it is covered in patches of small knots or pips called burrs, which are very decorative. Considering its grain structure Burr Elm is easy to machine and turns well. I always have a number of logs ready for conversion, along with some boards entirely covered in burrs.

### Discs

Although rare Burr Elm is available in small boards. These have incredible figure and would make the ideal focal point for furniture; say, if used as a drawer front. It is available in reasonably sized turning blanks.

In addition, to Elm and Burr Elm I also have a small stock of Wych Elm. Call for availability.

		Thickness					
		2"	51mm	3"	76mm	4"	101mm
Diameter							
4"	101mm	£2.25		£3.40		£4.45	
5"	122mm	£3.50		£5.25		£7.00	
6"	152mm	£5.05		£7.75		£10.00	
7"	178mm	£6.85		£10.30		£13.70	
8"	203mm	£8.95		£13.45		£17.90	
9"	229mm	£11.35		£17.00		£22.65	
10"	254mm	£14.00		£21.00		£28.00	
11"	280mm	£16.95		£25.40			
12"	305mm	£20.00		£30.25			

### Squares

		Length				
		12"	305mm	18"	452mm	24"
Width/Thickness						
2"	51mm	£3.40		£5.00		£6.75
2 ½ "	76mm	£5.25		£7.85		£10.50
3"	101mm	£7.50		£11.35		£15.00
4"	122mm	£13.45		£20.00		£26.90

# Laburnum

## Laburnum (Laburnum Vulgate)

The heartwood is well figured and dark green when fresh, but this darkens to a deep brown on exposure. The sapwood is a white to pale yellow colour. It is hard and heavy, but turns very well.



Laburnum

It is a very rare wood and I only have small stocks available.

Prices and sizes are available upon request, but as a guideline Laburnum cost £4.20 per kilogram.

There is a distinct difference between the sapwood and the heartwood in Laburnum.



# Cedar



Cedar

All the cedar that I sell has a straight clear grain devoid of defect. On request I can supply timber that has more character for a lesser price.

A large straight grained cedar board machined to the customers specification.



## Cedar of Lebanon (*Cedrus Libanotica*)



Cedar of Lebanon has a distinctive strong fragrance, which deters moths and lends a pleasant smell to clothes. This is an excellent selling feature in fine cabinet work; as such it is ideal for use in chest bottoms, cabinet linings and drawer sides. It is suitable for joinery. The lower grades, which are often knotty, are very useful for garden furniture and cladding.

Cedar of Lebanon is softwood. The heartwood is strongly scented and resinous with contrasting growth rings marked by the darker dense latewood zones. The grades that I sell are straight grained with a medium to fine texture. The timber has a specific gravity of 0.56. It is a soft, brittle timber that has a low bending strength, stiffness, resistance to shock loads and crushing strength. It exudes resin and so should not be used for steam bending. The timber dries easily with only a slight tendency to warp and there is only a medium amount of movement in service. It is easy to work with hand or machine tools, with little blunting effect on cutters. Nails and screws hold well and the wood stains, varnishes, paints or polishes well resulting in a very good finish. Cedar is a durable wood, but is liable to insect attack.

## Boards

Thickness		Price (per cu. ft)
1"	25mm	£30.00
2"	51mm	£30.00
3"	76mm	£35.00
4"	101mm	£35.00

## Carving Blocks

Size		Price
18x12x3"	452x305x76mm	£25.90
18x12x4"	452x305x101mm	£34.60



# Boxwood

## Boxwood (*Buxus Sempervirens*)



Boxwood is a compact light yellow timber with the finest possible texture, that is often quite waxy. It is reserved for top quality turnery, small engravings and carving etc. It is often used by premium plane makers as an infill wood.

The logs available are usually small in diameter and they often have one drying shake which runs their entire length.

Generally I only have up to 5" diameter logs in stock, but occasionally larger pieces are available. Recently I had a piece that weighed 20 kilograms. Call for availability.

Up to 3" diameter: £2.20 per kilogram

3"-5" diameter: £4.20 per kilogram



Boxwood



# Sycamore

## Sycamore (Acer Pseudoplatanus)



Sycamore is one of the finest native hardwoods offering a consistently white colour in good lengths and width specifications. It is white to creamy-white in colour with a natural lustre. It has a uniform straight grain with a fine close, even texture. Quarter sawn stock has a beautiful laced figure due to very visible rays.

With a specific gravity of 0.61 this wood is of medium density and has medium bending and crushing strengths, low resistance to shock loads and very low stiffness. It is good for steam bending. The sapwood is very perishable, though permeable for preservative treatments.

## Sycamore

I have a very large stock of native bowl blanks ready for sale. Sycamore makes up a large percentage of this stock.

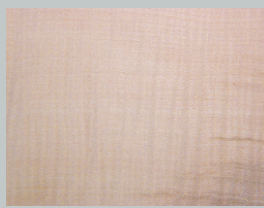


## Discs

Diameter		Thickness							
		1" 25mm	1 1/2" 38mm	2" 51mm	3" 76mm	4" 101mm			
4"	101mm	£1.00	£1.25	£1.30	£1.95				
5"	122mm	£1.25	£1.50	£2.00	£3.00	£4.00			
6"	152mm	£1.80	£2.20	£2.90	£4.35	£5.80			
7"	178mm	£2.45	£2.95	£3.95	£5.90	£7.95			
8"	203mm	£3.20	£3.85	£5.15	£7.70	£10.25			
9"	229mm	£4.05	£4.90	£6.50	£9.75	£12.95			
10"	254mm	£5.00	£6.00	£8.00	£12.00	£16.00			
11"	280mm	£6.05	£7.30	£9.70	£14.55	£19.35			
12"	305mm	£7.20	£8.65	£11.55	£17.30	£23.00			
13"	330mm	£8.45	£10.15	£13.55	£20.30	£27.00			
14"	356mm	£9.80	£11.80	£15.70	£23.55	£31.35			



Two examples of ripple sycamore. Note the even mass of ripple grain running perpendicular to the grain of the wood.



Sycamore is very difficult to fell and dry. It should be felled during the winter period whilst the sap is in the root and then sawn, stickered and dried carefully to avoid sticker shadow. Often it is necessary to carry out an end rearing process. This is process that has taken quite a while to get right. However, I am now very good at drying sycamore and all my stock is free from sticker marks.

Sycamore works easily with hand or machine tools, providing a fine, smooth finish. If a stained finish is required care must be taken to avoid the stain becoming patchy. There is a moderate blunting effect on tools. The timber nails, glues, stains and polishes excellently.

Sycamore is generally used for turnery, such as brush handles and bobbins. It is popular in the kitchen, especially for butchers' blocks where it will be contact with food. Nowadays it is popular for interior joinery and fine cabinet making.

## Boards

Thickness		Price (per cu. ft)
1"	25mm	£36.00
1 1/2"	38mm	£36.00
2"	51mm	£36.00
3"	76mm	£38.00
4"	101mm	£42.00

## Squares

		Length			
		12" 305mm	18" 452mm	24" 610mm	
Width/Thickness					
2"	51mm	£1.95	£2.90	£3.90	
3"	76mm	£4.35	£6.50	£8.70	
4"	101mm	£7.70	£11.55	£15.40	

**Figured/Fiddleback/Ripple Sycamore:** is Sycamore with an even mass of ripple grain running at right angles to the grain of the wood. This is a much sought after wood for the manufacture of musical instruments. I separately store all figured sycamore and so have built up a small stock of very beautifully figured wood. Call for availability.

2" in stock- instrument quality. £70.00 per cuft.

## Sycamore



I can provide defect free Sycamore in board, square or disk form. It is very versatile wood that can be used for everything.



# Yew

Yew is a very attractive softwood, with huge amounts of character. However, when using Yew growth characteristics that may normally be seen as defects should be used as an attractive feature. I keep a large number of highly figured boards in stock together with a number of small logs to match any customer's requirements. Good logs are becoming increasingly more difficult to obtain, but my present stock is of excellent quality.

## Yew

All my boards of Yew are of exceptional character. Call for availability.



## Yew (Taxus Baccata)



The heartwood colour is an orange-brown colour streaked with dark purple, mauve and brown patches together with veins, tiny knots and clusters of in-growing bark. The sapwood is a distinctive white to cream colour resulting in a contrast with the heartwood. It has medium texture with a specific gravity of 0.67. The timbers bending and crushing strengths are medium, with a low stiffness and resistance to shock loads being standard. It is good for steam bending, especially the straighter grained material.

Yew dries very rapidly with only a very small degrade. Also, there is only a small amount of movement in service.

Yew boards stored in undercover storage.



## Discs

Diameter		Thickness			
		1" 25mm	2" 51mm	3" 76mm	
3"	76mm		£1.45		
4"	101mm	£1.30	£2.60		£3.85
5"	122mm	£2.00	£4.00		£6.00
6"	152mm	£2.90	£5.80		£8.65
7"	178mm	£3.95	£7.85		£11.80
8"	203mm	£5.10	£10.25		£15.35
9"	229mm	£6.50	£12.95		£19.45
10"	254mm	£8.00	£16.00		£24.00
11"	280mm	£9.70	£19.35		£29.00
12"	305mm	£11.55	£23.00		£34.00



Logs are more than often sold to be made into veneer, as Yew is a really stunning veneer. However, I do not sell any of made timber for veneer and so have a reasonably large stock of Yew logs.



Yew Oyster



The wood is moderately difficult to work, but straight grained material works readily and can be planed to a good smooth finish, whereas more wild grain has a tendency to produce tear out. Nailing generally requires pre boring and the oiliness of the wood makes it hard to glue. It can however be polished to an extraordinary finish.

Out of almost all timbers Yew will last the longest in the ground, lending itself to use as gate pots. It often occurs in bogs. The Bog Yew from swamps and marshes has a particularly waxy feel with beautiful colouring. I recently obtained a large amount of Bog wood, not just Yew, but Oak as well, from the Cambridgeshire fens. Call for availability.



Yews main use in history has been as bow staves for English longbows. It is excellent for turnery and furniture making, giving a beautiful finish. There is a high demand for yew in the veneer form where it is exceptionally decorative and is often used for marquetry, fine furniture and panelling.

The distinctly irregular grain of Yew is particularly striking, but can be hard to machine to a smooth finish.

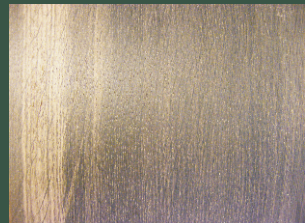
## Yew

Bog Wood (Oak)



## Squares

		Length					
		12"	305mm	18"	452mm	24"	610mm
Width/Thickness							
1"	25mm	£1.00		£1.50		£2.00	
2"	51mm	£3.85		£5.80		£7.70	
2 1/2"	64mm	£6.00		£9.00		£12.00	
3"	76mm	£8.65		£13.00		£17.30	
4"	101mm	£15.40		£23.05		£30.80	



# Cherry



Note how straight the grain is on all Cherry. this makes it much easier to machine.

## Cherry

Unfortunately, due to its tendency to warp, cherry boards are only available in relatively narrow boards. I can supply all grades of Cherry from defect free boards to those that are full of character.

## Cherry (Prunus Avium)



The heartwood is pale pinkish-brown, straight grained, and has a fairly fine, even texture. A distinctive green streak often occurs running with the grain. The timber has a very good steam bending classification, with medium crushing strength, medium shock resistance, but low stiffness ratings. In terms of its strength properties it is similar to Oak. Cherry dries fairly rapidly but tends to warp. There is only a medium amount of movement in service. The timber has a specific gravity of 0.61. The sapwood is liable to attack from the common furniture beetle, but the entirety of the wood is almost immune to powder post beetle. The heartwood is moderately durable.

## Discs

		Thickness							
		1 1/4"	38mm	2"	51mm	3"	76mm	4"	101mm
Diameter									
4"	101mm	£1.00		£1.45		£2.20		£2.90	
5"	122mm	£1.40		£2.25		£3.40		£4.50	
6"	152mm	£2.05		£3.25		£4.90		£6.50	
7"	178mm	£2.75		£4.40		£6.60		£8.85	
8"	203mm	£3.60		£5.80		£8.65		£11.50	
9"	229mm	£4.55		£7.30		£10.95		£14.60	
10"	254mm	£5.65		£9.00		£13.50		£18.00	
11"	280mm	£6.80		£10.90		£16.35		£21.80	
12"	305mm	£8.10		£12.95		£19.45		£25.95	



Once machined and finished it is beautiful timber. The wood accepts nails, glues and stains well and can be brought to an excellent finish. There is only a moderate blunting effect on the cutters; however a cutting angle of 20° when machining across the grain is helpful, as it can tear.



The strongly defined grain of Cherry accepts a finish very well. It lends itself well to french polishing where the effect is truly stunning. I have a pair of bedside tables made of Cherry and the shellac increases the warmth of the wood hugely.

Cherry is generally used on small sections due to its tendency to warp. It is popular for cabinetmaking and furniture, but only on small pieces, such as cabinets and jewellery boxes.

### Boards

Thickness		Price (per cu. ft)
1"	25mm	£36.00
1 1/4"	31mm	£36.00
2"	51mm	£36.00
2 1/2"	64mm	£38.00
3"	76mm	£40.00



Cherry

### Squares

Width/Thickness		Length			
		12" 305mm	18" 452mm	24" 610mm	
2"	51mm	£2.20	£3.25	£4.40	
2 1/2"	64mm	£3.40	£5.10	£6.80	
3"	76mm	£4.85	£7.30	£9.70	
4"	101mm	8.65	£13.00	£17.30	

# English Walnut

## English Walnut (*Juglans Regia*)



All the Walnut I sell comes from England. I do not import any Walnut. As such, the timber tends to be much darker. The above image is of European Walnut, whereas the image below is of English Walnut. Having had far longer to mature, as the trees are older, the English Walnut has far more colour.



The timber dries well, but slowly requiring long periods of slow drying to prevent splitting. All my Walnut is slowly air dried over a period of 3-5 years.

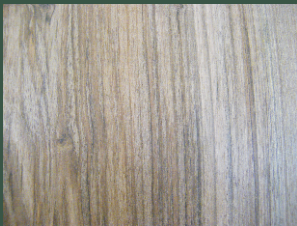
Walnut is one of the finest timbers available from England. The colour of the heartwood is grey-brown in colour with small streaking of darker colours distributed around the timber. The grain is generally straight, but can be wavy. It has a distinctly coarse texture with a specific gravity of 0.64. Walnut has medium bending strength and resistance to shock loads, high crushing strength and low stiffness. It is excellent for steam bending.

## Discs

		Thickness		
		1" 25mm	2" 51mm	3" 76mm
Diameter				
4"	101mm	£1.60	£3.20	£4.80
5"	122mm	£2.50	£5.00	£7.50
6"	152mm	£3.60	£7.20	£10.80
7"	178mm	£4.90	£9.80	£14.75
8"	203mm	£6.40	£12.80	£19.20
9"	229mm	£8.10	£16.20	£24.30
10"	254mm	£10.00	£20.00	£30.00
11"	280mm	£12.10	£24.10	£36.30
12"	305mm	£14.40	£11.55	£43.20

It is moderately durable. The sapwood is much more likely to be the subject of insect attack than the heartwood, but is also far more permeable, and so can be readily treated with preservatives.

## English Walnut



# at

This is an excellent timber that is equally split between solid and veneer use. Its main uses include high class furniture, turnery, car interiors and it is the timber of choice for high quality gunstocks.

Walnut works very well with both hand and machine tools, with only a moderate blunting effect on cutting edges. It is an easy timber to carve. Nailing and screwing accepted easily, gluing is satisfactory. It turns well and accepts most finishes, polishing to a high finish.

## Carving Blocks

Size		Price
12x8x3"	305x203x76mm	£28.80
12x8x4"	305x203x101mm	£38.40



Top quality gunstocks have excellent figuring, such as curly and rippled grain. The only way to obtain this is to leave the stump in the ground for a number of years after cutting the tree down. When you come back the stump the figure of the wood has dramatically increased. I have a large stock of this special wood as this has been my practice for years; much of it is 3 inch thick stock ideal for gunstocks. Call for availability.

## Boards

Thickness		Price (per cu. ft)
1"	25mm	£94.00
1 1/2"	38mm	£95.50
2"	51mm	£100.00
3"	76mm	£105.00
4"	101mm	£108.00

Often in other mills Walnut is steamed to reduce the difference between the heartwood and the sapwood. I do not do this and so the contrast between the two is readily noticeable.

## Squares

Width/Thickness		Length					
		12"	305mm	18"	452mm	24"	610mm
1 1/2"	38mm	£2.70		£4.05		£5.40	
2"	51mm	£4.80		£7.20		£9.60	
2 1/2"	64mm	£7.50		£11.25		£15.00	
3"	76mm	£10.80		£16.20		£21.60	
4"	101mm	£19.20		£28.80		£38.40	
5"	122mm	£30.00		£38.80		£60.00	

## English Walnut



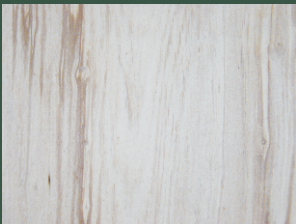
# Horse Chestnut

We have managed to obtain some very large trees where the heartwood is a golden yellow in colour, with dark stripes. The outer part of the tree is a creamy white.

Ideal for colouring and very easy to turn.



Horse Chestnut



## Horse Chestnut (*Castanea Sativa*)



The colour is pale brown, which is rather similar to Oak, but without the silver grain figure of oak due to finer rays. The grain is relatively straight, but often spirals. Chestnut has a coarse texture with ring shake and sometimes pockets of stain.

It has a specific gravity of 0.54, so is of medium density having a low bending strength, medium crushing strength and very low stiffness and resistance to shock loads. If bent in the green state it is liable to rupture on the inner face, however air dried wood steam bends well, but is very intolerant of defects. Chestnut is difficult to dry and dries slowly with a marked tendency to collapse and honeycomb. It retains patches of moisture, and does not respond well to reconditioning treatments. There is small movement in service.

## Discs

		Thickness			
		2" 51mm	3" 76mm	4" 101mm	5" 122mm
Diameter					
4"	101mm	£1.00	£1.20	£1.60	
5"	122mm	£1.45	£1.90	£2.50	
6"	152mm	£1.80	£3.25	£3.60	
7"	178mm	£2.45	£3.70	£4.90	
8"	203mm	£3.20	£4.80	£6.40	
9"	229mm	£4.10	£6.10	£8.10	
10"	254mm	£5.00	£7.50	£10.00	£12.50
11"	280mm	£6.10	£9.10	£12.10	£15.20
12"	305mm	£7.20	£10.80	£14.40	£18.00
13"	330mm	£8.45	£12.70	£16.90	
14"	356mm	£9.80	£14.70	£19.60	£24.50



# at

Due to Horse Chestnut's acidic character it tends to corrode metal in contact with it under damp conditions and blue-black iron stains are likely to appear in the wood if in contact with iron compounds, such as in clamps. There is only slight blunting effect on tools and the material is easy to work with all hand and power tools. It takes nails, screws, stains and polishes well. The sapwood is liable to powder post beetle and furniture beetle attack, but the heartwood is very durable.

Chestnut is often used for furniture; it is the traditional timber for drawer sides and back panels in Oak furniture. Aside from turnery it is commonly found in the kitchen where it is used to store perishables, as an inferior, but considerably cheaper alternative to Oak casks.

## Boards

		Thickness	Price (per cu. ft)
1"	25mm	£35.00	
1 1/2"	38mm	£35.00	
2"	51mm	£35.00	
3"	76mm	£35.00	
4"	101mm	£35.00	
5"	122mm	£37.00	
6"	152mm	£39.00	



Horse Chestnut has a wonderful character that is starkly different to the much more monotone conventional hardwoods.



Horse Chestnut

## Squares

		Length					
		12"	305mm	18"	452mm	24"	610mm
Width/Thickness							
2"	51mm	£1.20		£1.80		£2.40	
3"	76mm	£2.70		£4.05		£5.40	
4"	101mm	£4.80		£7.20		£9.60	

# Poplar (Lime)

Poplar is a much under utilised hardwood, which is ideal for short mouldings and drawer sides. I often recommend it as an alternative to Oak beams for outbuildings. I hold stock of very large beams, often for railway sleepers and can cut a cutting list and then send the entire order to be tanalised. It brings the cost of timber framing down considerably.



Large piles of Poplar beams



## Poplar (Lime)



## English Poplar (*Tilia Vulgaris*)



Poplar is a creamy yellow, maturing to a yellow brown or pale brown. The grain is straight and the texture fine and uniform. Normally clear but the wood may include some colour, sound and pin knots which should be accepted as part of the character of this timber. The timber has a specific gravity of 0.54. It only has a medium bending and crushing strength, low stiffness and low resistance to shock loads. It is very resistant to splitting. It is only suitable for steam bending large radii. The heartwood is perishable, but permeable for preservative treatment.

Poplar dries fairly rapidly, but with some tendency to distort. It has medium movement in service.

## Carving Blocks

	Size	Price
18x6x2"	452x152x51mm	£7.60
18x8x2"	452x203x51mm	£10.10
18x10x2"	452x254x51mm	£12.60
18x12x2"	452x305x51mm	£15.15
24x6x2"	610x152x51mm	£10.10
24x8x2"	610x203x51mm	£13.45
24x10x2"	610x254x51mm	£16.80
24x12x2"	610x305x51mm	£20.20
18x6x5"	452x152x122mm	£18.90
18x8x5"	452x203x122mm	£25.50
18x10x5"	452x254x122mm	£31.50
18x12x5"	452x305x122mm	£37.80
18x6x3"	452x152x76mm	£11.35
18x8x3"	452x203x76mm	£15.15
18x10x3"	452x254x76mm	£18.90
18x12x3"	452x305x76mm	£22.70
24x6x3"	610x152x76mm	£15.15
24x8x3"	610x203x76mm	£20.20
24x10x3"	610x254x76mm	£25.20
24x12x3"	610x305x76mm	£30.25
18x6x6"	452x152x152mm	£22.70
18x8x6"	452x203x152mm	£30.25
18x10x6"	452x254x152mm	£37.80
18x12x6"	452x305x152mm	£45.40



The grain of a Poplar board with excellent colour.

Poplar is also available in boards and in turning blanks. Please contact me for pricing and availability. I do not keep a large stock of air dried Poplar boards, but will often have recently felled Poplar trees that may suit your requirements.

18x6x4"	452x152x101mm	£15.15
18x8x4"	452x203x101mm	£20.20
18x10x4"	452x254x101mm	£25.20
18x12x4"	452x305x101mm	£30.25
24x6x4"	610x152x101mm	£20.20
24x8x4"	610x203x101mm	£26.90
24x10x4"	610x254x101mm	£33.60
24x12x4"	610x305x101mm	£40.35
24x6x5"	610x152x122mm	£25.20
24x8x5"	610x203x122mm	£33.60
24x10x5"	610x254x122mm	£42.00
24x12x5"	610x305x122mm	£50.40

Poplar and Lime both work easily and readily with hand and machine tools, but are inclined to be woolly and are quite soft, so require low angle sharp tooling for a smooth finish. Only a slight blunting effect on cutting edges occurs. The wood glues well and nails satisfactorily. It can be brought to a good finish by staining and also by other finishing processes. It can be stained as a substitute for more expensive timbers.



The most important use of Poplar and Lime is for wood carving since it has the ability to resist splitting in any cutting direction. As it does not draw the knife away from the desired direction of cut it makes an excellent cutting board. It is a much superior to Ramin for broom handles and turns extremely well.

## English Lime (Tilia Vulgaris)



Very similar to Poplar, but generally used by carvers for whom it is choice wood.



It has a pale yellow/brown colour with a soft compact grain and a fine even texture. This makes it ideal for carvers. It finishes very sharply accepting all types of finish.

## Poplar (Lime)

English Poplar and English Lime are practically the same wood. However, Lime is only available in carving blocks whereas Poplar can be supplied in boards for joinery aswell.

# Firewood

Please call or  
email me to  
order

## Prices



Builders Bag (approx. 1 cu. metre): £35.00



Half Trailer Load (approx. 2 cu. metres): £50.00



Full Trailer Load: £90.00



Jumbo Load: £200.00

## Firewood

Any wood you store should be stored undercover but away from the house, so as to remain dry until used.

Firewood is now seen as an environmentally friendly means of heating because using it results in virtually no additional 'fossil' carbon dioxide being added to our present environment and thus helps minimise the effects of climate change. Firewood is also a renewable resource and using it today will not prevent our children and grandchildren from using firewood in the future.



Logs air drying before being split.



An lot of logs being split.

I sell wood by volume rather than by weight because between 35% and 60% of the weight of freshly felled wood comes from water. Dry seasoned is the best, which is why it is all I sell. It is a bad idea to try and to burn unseasoned wood as it will produce less heat and large amounts of steam, so will create long term problems with the chimney and flue.

You can tell the wood that I sell has been air dried, as the bark when pulled back will come away fairly easily. Conversely you should not burn 'kiln dried' wood as it burns much hotter than 'air dried' wood and can easily damage any enclosed fireplace it is used in.



Newly split, fully dried, logs ready to be dispatched.



# Commissions

I first started off as a joiner and have continued to build furniture and other wood related products. Much of the furniture in my own home was built by myself. I tend to build very strong traditional style furniture out of top quality native hardwoods.



A gate, custom built to fit a between two pre-existing pillars.



A dining room table, designed using traditional joinery (tusk tenons).

Often I will be asked to build only part of a piece of furniture. recently a large management firm commissioned me to create a number of laminated tabletops for one of their offices. These were far superior to off the shelf products, not only in the construction, but also in the quality of wood that was used.

For commissions related to turning please see the next page.

I have experience in the building of many types of furniture this could be anything from a French polished, set of dining chairs and table to simple outdoor swings or fences.

I often supply and fit kitchens to order, but only those kitchens that use predominately natural timbers. I am available to do all aspects of interior carpentry work. I particularly like fitting floor boards as I think nothing sets a house off better than the natural finish of a skilfully fitted and finished wooden floor.

I will take on almost all commissions and enjoy building different structures, such as chicken coops and birdhouses.



A large chicken coop, designed for constant outdoor exposure.

If there is anything that you want building then give me a call, I'm always happy to discuss your requirements.

Commissions

# Woodturning



Ash turning blank



Wenge square turning blank



Lignum Vitae turning blank



Wenge turning/carving blank

Woodturning

Woodturning is what I first started out doing and I enjoy it immensely. I can turn individual pieces or bespoke parts for a larger project. Please have a look at these pages for examples of my work. Being in the timber industry it is relatively easy for me to obtain large exotic blanks that are normally very rare.



Massur Birch, turned pot (9x9x13")

One of my favourite pieces; made from a very rare wood that has such a variation in texture and colour.



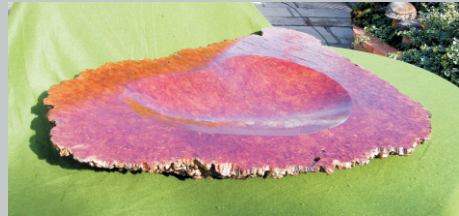
Spalted Poplar, huge turned bowl (22x22x9")

This bowl is vast, both of my 18 month old daughters can sit in it at once!



English Walnut, turned bowl (11x11x6")

This really would make a wonderful fruit bowl.



Burr Jarra, large hand carved oval bowl (26x16x3")

This wood has an amazing colour that is never present among native woods.



Burr oak, turned bowl (14x8x4")

The items on these pages are only a small sample of my work. I also undertake turning on a bespoke basis and can turn large, or small items to your requirements, made out of a specific type of wood.



Store of native turning blanks



Store of exotic turning blanks



Elm, turned square bowl (13x13x4")



Burr Elm, turned plate (13x13x2.5")



Spalted Beech, turned vase (6x6x10")

On this vase the spalting is really, very strongly pronounced.

The picture underneath that of this vase is of the tree stump from which it came. After cutting down the tree I left the stump for several years for the spalting to occur through decay.

I have a very large store of turning blanks, with the examples at the sides being only a small representation. As a tree surgeon very large blanks are easily obtainable. Give me a call to discuss your requirements.



'The Yew Collection'  
Yew, goblet, pot and dish

The contrasting heartwood and sapwood on these pieces make them very interesting.



Burr Elm, turned bowl (13x13x4")



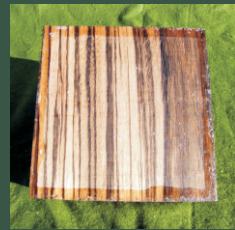
Yew Oyster



Spalted Beech turning/  
carving blank



Purpleheart turning/  
carving blank



Zebrano turning/  
carving blank

Woodturning



# Landscaping

I am a qualified Tree Surgeon and undertake all aspects of Arboriculture. As part of this work I can also undertake any and all aspects of landscaping, as there is a lot more to ensuring the garden is attractive apart from just cutting down and pruning trees.

There is a lot more to making an area look good than removing trees and so I offer a full landscaping service. Using a fleet of purpose-built machinery I can undertake almost all forms of landscaping. See the Pipewell Hall project for an example of the scale of work I can undertake.



Boring the holes for fence posts.



Excavating the boundary of a river.

Building and installing decking, fences and sheds is also possible. Specialist equipment, such as large boring machines, means that I can take the project from start to finish, from building a solid foundation to sealing the structure against the elements.

## Tree Surgery

I am a qualified tree surgeon and can undertake all forms of arboriculture, be it felling mature trees to removing a few branches. If required to remove trees then I will fell and take away all of the tree. The branches will be shredded and larger pieces converted into firewood. If the tree is large enough and of the right shape then the trunk can be used for furniture making or planking.



A newly felled tree



Waste branches being shredded for use as mulch and chippings.





Cutting the tree to a size that the bandsaw can accommodate.



Final processing of a tree into planks using a Wood-Mizer portable sawmill.

## Pipewell Hall

I am currently involved in a major project that involves a significant amount of landscaping for Pipewell Hall. The overall intention is to build an artificial lake which is reached by means of several Oak bridges, which lead to a 12 x 12 metre platform in the centre of the lake. The platform will be capable of holding over 100 people in comfort. The artificial island and lake are done in the style of the work undertaken at Attingham, Shropshire by Sir Humphry Repton. The oak bridges are my idea and I'm particularly proud of them.



The construction of the giant platform

Often for extremely large projects, such as that at Pipewell Hall, it is necessary for me to bring in outside assistance, in the form of labourers and machinery. All people with whom I am associated are fully qualified and references can be provided at your request.



The custom built oak bridges. All the landscaping and the excavation for the artificial lake was done by my team and I, using a very big digger.

The finished project. the bridges are hidden behind the trees, but the platform and scale of the lake is clearly visible.



A view of the nearly complete platform once the lake had been filled with water.



# A. Harrison

Wood turning, furniture making & timber supplies

About Me

Ash & Elm

Oak & Beech

Burr Elm

Laburnum

Cedar

Boxwood

Sycamore

Yew

Cherry

English Walnut

Horse Chestnut

Poplar (Lime)

Firewood

Commissions

Woodturning

Landscaping

*'To put it simply, I undertake anything that involves the use of wood'*



This could be anything from planting trees after a program of landscaping work, to felling mature trees and then making use of the wood for furniture, kitchens, fencing or firewood. I make use of all parts of the tree with nothing allowed to go to waste - I just love working with wood!

I will do my very best to provide help and advice where possible, and to assist you in resolving any aspect relating to wood.

All you need to do is to call me so we can discuss your requirements. I am always willing to talk about any aspect concerning wood, woodturning, timber, firewood, etc . I've been in the business so long, that if I can't help you, I'll say so, and will be able to direct you to a colleague who can - what have you got to lose, nothing, so call me - it's free.



Tel: 01536 725192

Mob: 07780 768625

E-Mail: [Andy.Harrison@AHarrisonwoodturning.co.uk](mailto:Andy.Harrison@AHarrisonwoodturning.co.uk)